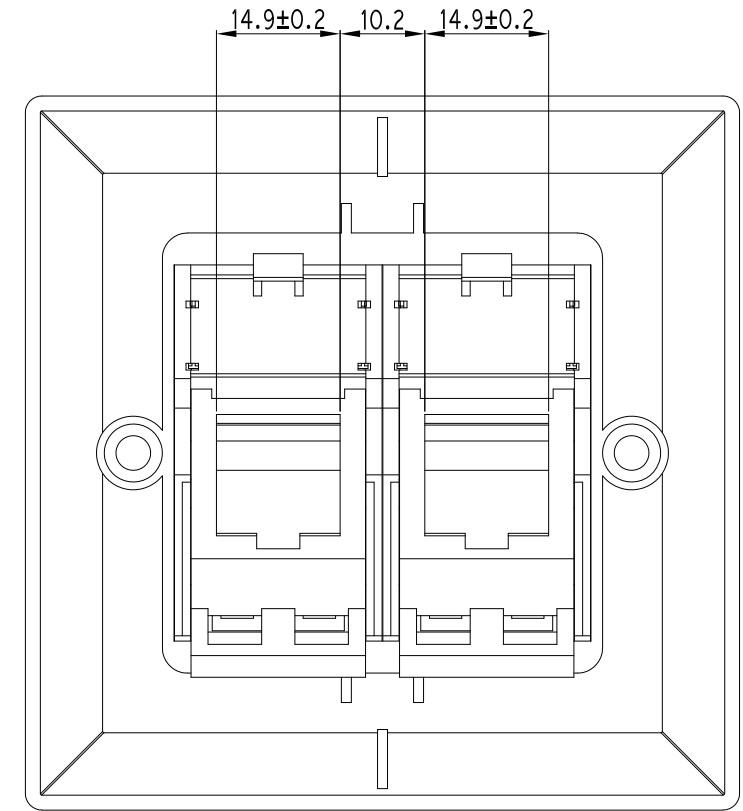
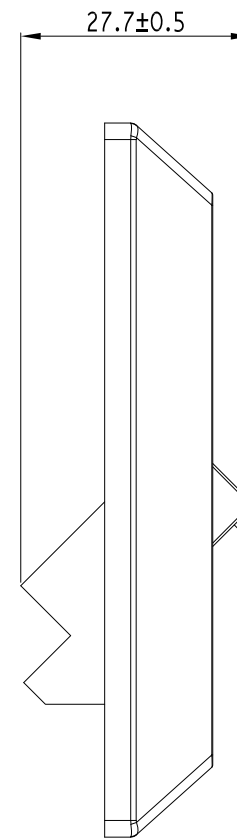
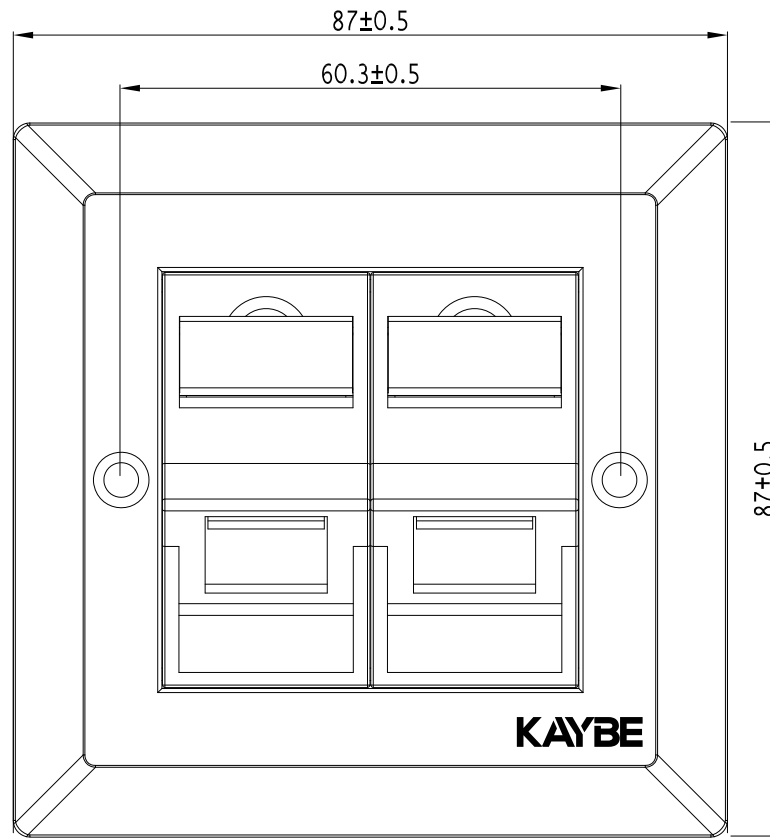
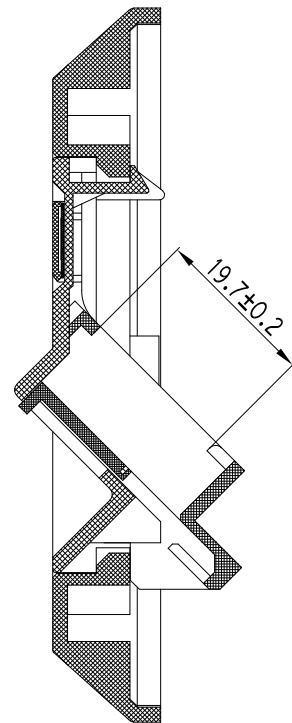


Modification Career

NO:	Modification	Modified by	Approved by	Date



NOTES:

ENVIRONMENTAL:

1. Operating temperature range :-10°C-+60°C
2. Storage temperature range :-40°C-70°C
3. Operating humidity range:10%-90%

MECHANICAL:

1. Plastic parts: high quality engineering plastic



Designed by	Unit	mm	Client	Tolerances	
	REV		Weight	.X	±0.1
Verified by	Scale		Material	.XX	±0.05
	Product NO: BFP22AW			Angle	±0.5°
Approved by	Description: Dual Port Shuttered against			First angle projection	